

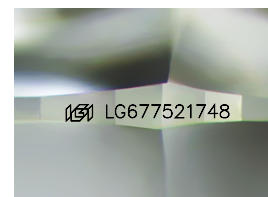
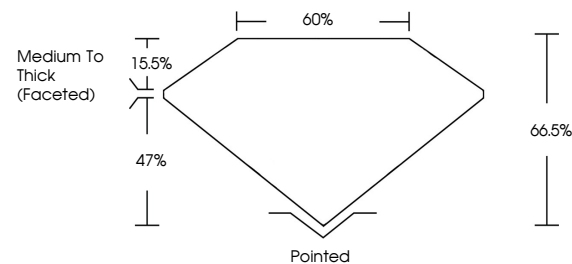


ELECTRONIC COPY

LABORATORY GROWN DIAMOND REPORT

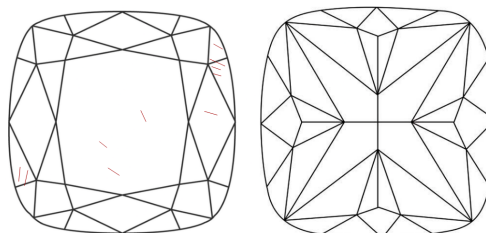
LG677521748
Report verification at igi.org

PROPORTIONS



Sample Image Used

CLARITY CHARACTERISTICS



KEY TO SYMBOLS

Red symbols indicate internal characteristics.
Green symbols indicate external characteristics.

COLOR

D E F G H I J Faint Very Light Light

CLARITY

IF WS¹⁻² VS¹⁻² SI¹⁻² I¹⁻³

Internally Flawless	Very Very Slightly Included	Very Slightly Included	Slightly Included	Included
------------------------	--------------------------------	---------------------------	----------------------	----------

LABORATORY GROWN DIAMOND REPORT



March 8, 2025

IGI Report Number **LG677521748**

Description	LABORATORY GROWN DIAMOND
-------------	--------------------------

Shape and Cutting Style **SQUARE CUSHION MODIFIED
BRILLIANT**

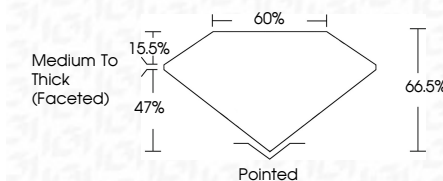
Measurements 6.80 X 6.75 X 4.49 MM

GRADING RESULTS

Carat Weight 1.59 CARAT

Color Grade	D
-------------	---

Clarity Grade VS 1



ADDITIONAL GRADING INFORMATION

Polish **EXCELLENT**Symmetry **EXCELLENT**Fluorescence **NONE**Inscription(s) LG677521748

Comments: As Grown - No indication of post-growth treatment.

This Laboratory Grown Diamond was created by High Pressure High Temperature (HPHT) growth process.
Type II



© IGI 2020, International Gemological Institute

FD - 10 20

www.igi.org

THIS DOCUMENT WAS PRODUCED WITH THE FOLLOWING SECURITY MEASURES: SPECIAL DOCUMENT PAPER, INK SCREENS, WATERMARK BACKGROUND DESIGNS, HOLOGRAM AND OTHER SECURITY FEATURES NOT LISTED AND DO EXCEED DOCUMENT SECURITY INDUSTRY GUIDELINES

March 8, 2025	IGI Report No. USG7821748	
SQUARE CUSHION MODIFIED BRILLIANT		
	1.59 CARAT	D
	6.80 X 6.75 X 4.49 MM	
Carat Weight	Color Grade	Clarity Grade
		VS 1
		66.5%
		60%
		Medium to Thick (Focaled)
Cut	Polish	Proportioned
	Symmetry	EXCELLENT
	Fluorescence	EXCELLENT
	Inscription(s)	NONE
		6881 USG7821748
Comments:	No indication of post-growth treatment.	
	This Laboratory Grown Diamond was created by High Pressure High Temperature (HPHT) growth process.	
	Type II	