



ELECTRONIC COPY

LG645472795 Report verification at igi.org

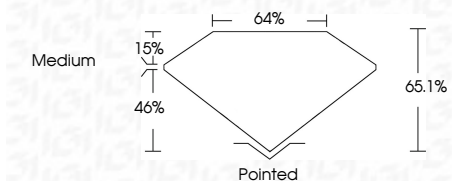


August 1, 2024 IGI Report Number LG645472795 Description LABORATORY GROWN DIAMOND Shape and Cutting Style CUT CORNERED RECTANGULAR MODIFIED BRILLIANT

Measurements 10.55 X 7.33 X 4.77 MM

GRADING RESULTS

Carat Weight 3.19 CARATS Color Grade D Clarity Grade VVS 1



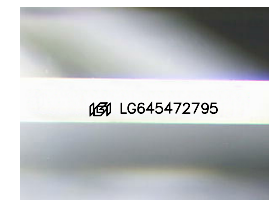
ADDITIONAL GRADING INFORMATION

Polish EXCELLENT Symmetry EXCELLENT Fluorescence NONE Inscription(s) LG645472795 Comments: As Grown - No indication of post-growth treatment. This Laboratory Grown Diamond was created by High Pressure High Temperature (HPHT) growth process. Type II



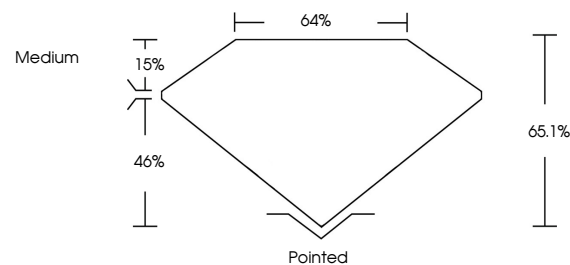
August 1, 2024 IGI Report No LG645472795 CUT CORNERED RECT. MODIFIED BRILLIANT 3.19 CARATS D 3.19 CARATS D VVS 1 65.1% 46% Medium Pointed EXCELLENT EXCELLENT NONE NONE LG645472795

Comments: As Grown - No indication of post-growth treatment. This Laboratory Grown Diamond was created by High Pressure High Temperature (HPHT) growth process. Type II

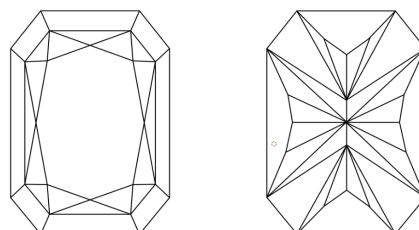


Sample Image Used

PROPORTIONS



CLARITY CHARACTERISTICS



KEY TO SYMBOLS

Red symbols indicate internal characteristics. Green symbols indicate external characteristics.

COLOR

D E F G H I J Faint Very Light Light

CLARITY

IF VVS 1-2 VS 1-2 SI 1-2 I 1-3 Internally Flawless Very Very Slightly Included Very Slightly Included Slightly Included Included



August 1, 2024 IGI Report No LG645472795 CUT CORNERED RECT. MODIFIED BRILLIANT 3.19 CARATS D 3.19 CARATS D VVS 1 65.1% 46% Medium Pointed EXCELLENT EXCELLENT NONE NONE LG645472795

Comments: As Grown - No indication of post-growth treatment. This Laboratory Grown Diamond was created by High Pressure High Temperature (HPHT) growth process. Type II