



ELECTRONIC COPY

LG629494723

Report verification at igi.org

LABORATORY GROWN DIAMOND REPORT

April 11, 2024
IGI Report Number LG629494723
Description LABORATORY GROWN DIAMOND
Shape and Cutting Style CUT CORNERED RECTANGULAR MODIFIED BRILLIANT
Measurements 11.32 X 7.59 X 4.95 MM

GRADING RESULTS

Carat Weight 3.73 CARATS
Color Grade E
Clarity Grade VVS 2

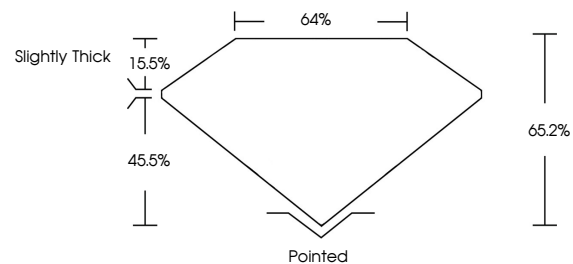
ADDITIONAL GRADING INFORMATION

Polish EXCELLENT
Symmetry EXCELLENT
Fluorescence NONE

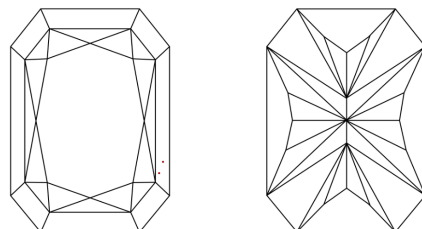
Inscription(s) IGI LG629494723

Comments: As Grown - No indication of post-growth treatment. This Laboratory Grown Diamond was created by High Pressure High Temperature (HPHT) growth process. Type II

PROPORTIONS



CLARITY CHARACTERISTICS



KEY TO SYMBOLS

Red symbols indicate internal characteristics. Green symbols indicate external characteristics.

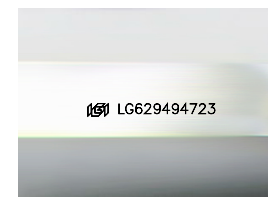
GRADING SCALES

CLARITY

Table with 5 columns: IF, VVS 1-2, VS 1-2, SI 1-2, I 1-3. Row 1: Internally Flawless, Very Very Slightly Included, Very Slightly Included, Slightly Included, Included.

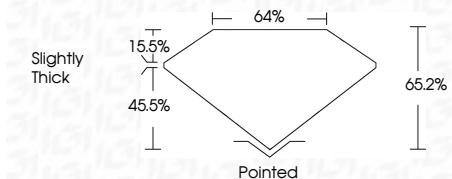
COLOR

Table with 10 columns: D, E, F, G, H, I, J, Faint, Very Light, Light.



Sample Image Used

April 11, 2024
IGI Report Number LG629494723
Description LABORATORY GROWN DIAMOND
Shape and Cutting Style CUT CORNERED RECTANGULAR MODIFIED BRILLIANT
Measurements 11.32 X 7.59 X 4.95 MM
GRADING RESULTS
Carat Weight 3.73 CARATS
Color Grade E
Clarity Grade VVS 2



ADDITIONAL GRADING INFORMATION

Polish EXCELLENT
Symmetry EXCELLENT
Fluorescence NONE
Inscription(s) IGI LG629494723
Comments: As Grown - No indication of post-growth treatment. This Laboratory Grown Diamond was created by High Pressure High Temperature (HPHT) growth process. Type II



April 11, 2024
IGI Report No LG629494723
CUT CORNERED RECT. MODIFIED BRILLIANT
3.73 CARATS E
3.73 CARATS E
VVS 2
65.2%
45.5%
Slightly Thick
Pointed
EXCELLENT
EXCELLENT
NONE
IGI LG629494723

Comments: As Grown - No indication of post-growth treatment. This Laboratory Grown Diamond was created by High Pressure High Temperature (HPHT) growth process. Type II