



**ELECTRONIC COPY**

## LABORATORY GROWN DIAMOND REPORT

June 22, 2023	
IGI Report Number	LG587389013
Description	LABORATORY GROWN DIAMOND
Shape and Cutting Style	CUT CORNERED RECTANGULAR MODIFIED BRILLIANT
Measurements	7.17 X 5.13 X 3.36 MM

## GRADING RESULTS

Carat Weight	1.04 CARAT
Color Grade	F
Clarity Grade	VS 2

### ADDITIONAL GRADING INFORMATION

Polish	EXCELLENT
Symmetry	EXCELLENT
Fluorescence	NONE

Inscription(s)  LG587389013

Comments: As Grown - No indication of post-growth treatment.

This Laboratory Grown Diamond was created by High Pressure High Temperature (HPHT) growth process.

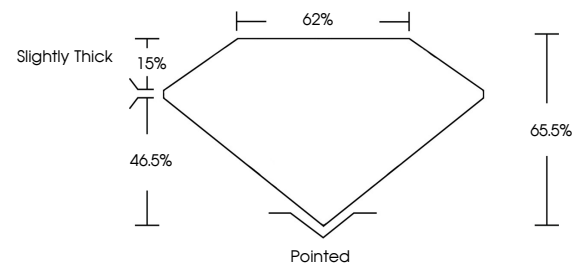
Type II

## LABORATORY GROWN DIAMOND REPORT

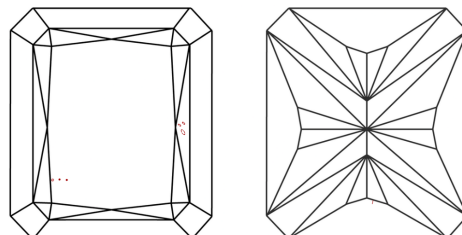
LG587389013

Report verification at [igi.org](http://igi.org)

## PROPORTIONS



## CLARITY CHARACTERISTICS



### KEY TO SYMBOLS

Red symbols indicate internal characteristics.  
Green symbols indicate external characteristics.

LABORATORY GROWN  
DIAMOND REPORT

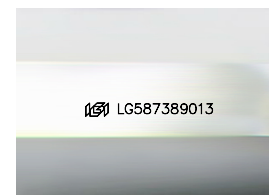
## GRADING SCALES

## CLARITY

IF	VVS <sup>1-2</sup>	VS <sup>1-2</sup>	SI <sup>1-2</sup>	I <sup>1-3</sup>
Internally Flawless	Very Very Slightly Included	Very Slightly Included	Slightly Included	Included

**COLOR**

D E F G H I J Faint Very Light Light



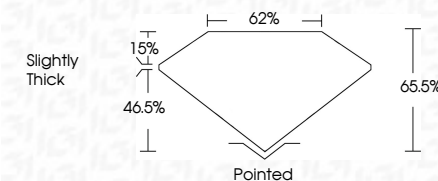
Sample Image Used



June 22, 2023	
IGI Report Number	LG587389013
Description	LABORATORY GROWN DIAMOND
Shape and Cutting Style	CUT CORNERED RECTANGULAR MODIFIED BRILLIANT
Measurements	7.17 X 5.13 X 3.36 MM

## GRADING RESULTS

Carat Weight	1.04 CARAT
Color Grade	F
Clarity Grade	VS 2



### ADDITIONAL GRADING INFORMATION

Polish	EXCELLENT
Symmetry	EXCELLENT
Fluorescence	NONE
Inscription(s)	 LG587389013
Comments: As Grown - No indication of post-growth treatment.	
This Laboratory Grown Diamond was created by High Pressure High Temperature (HPHT) growth process.	
Type II	



© IGI 2020, International Gemological Institute

FD - 10 20

**www.igi.org**

June 22, 2023	GI CORP NO LG567399013	1.04 CARAT	Vs2	65.5%	62%	Slightly Thick	Polished	Excellent	Excellent	NONE	68J LG567399013	<p><b>Comments:</b> No indication of post-growth treatment.</p> <p>The Laboratory Grown Diamond was created by High Pressure High temperature (HPHT) growth process.</p> <p>Type II</p>
	JUT CORNBED RECT. MODIFIED BRILLIANT	1.17 X 5.13 X 3.36 MM	Color Grade	Clarity Grade	Depth	Table	Girdle	Culet	Polish	Symmetry	Fluorescence	
		Carat Weight	Color Grade	Clarity Grade	Depth	Table	Girdle	Culet	Polish	Symmetry	Fluorescence	