



**ELECTRONIC COPY**

# LABORATORY GROWN DIAMOND REPORT

# LABORATORY GROWN DIAMOND REPORT

Diagram illustrating the proportions of a diamond-shaped gemstone (LG500145699). The proportions are defined by the following measurements:

- Width: 59.5%
- Depth: 43%
- Table: 14.5%
- Height: 62.1%

The stone is described as "Medium To Slightly Thick (Faceted)" and "Pointed".

## GRADING SCALES

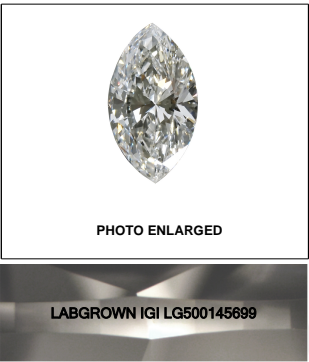
COLOR GRADING SCALE	CL	NC	FT	VLT	LT
	COLORLESS D-F	NEAR COLORLESS G-J	FAINT K-M	VERY LIGHT N-R	LIGHT S-Z
CLARITY (10x) GRADING SCALE	FL	VVS	VS	SI	I
	FLAWLESS INTERNALLY FLAWLESS	VERY VERY SLIGHTLY INCLUDED	VERY SLIGHTLY INCLUDED	SLIGHTLY INCLUDED	INCLUDED

The laboratory grown diamond described in this Report ("Report") has been graded, tested, analyzed, examined and/or inscribed by International Gemological Institute ("IGI") in a laboratory grown diamond facility. IGI is a nationally recognized gemological and optical properties measuring diamond, with the exception of being grown by a man (a manufactured product). IGI employs and utilizes those techniques and equipment currently available to IGI, including, without limitation, 10X magnification, corrected and uncorrected color, fluorescence, and fluorescence spectrum, and a variety of measuring device, Diamond Sure™, Diamond View™, Spectrophotometer and such other instruments and/or processes as deemed appropriate by IGI. This Report includes adequate security features. A duly accredited gemologist or jeweler can advise you with regard to the importance of and interrelationship between color, clarity and carat weight.

**THIS REPORT IS NEITHER A GUARANTEE, VALUATION, NOR APPRAISAL OF THE GEMSTONE DESCRIBED HEREIN. PLEASE REVIEW THE LIMITATIONS AND RESTRICTIONS WITH CARE. FOR A FULL LIST OF FORMS, DISCLOSURES, LIMITATIONS AND DISCLAIMERS, PLEASE GO TO [WWW.IGI.ORG](http://WWW.IGI.ORG) OR CALL 1-888-BUY-IGI.**

© INTERNATIONAL GEMOLOGICAL INSTITUTE, INC.

Red symbols indicate internal characteristics.  
Green symbols indicate external characteristics.

**LASERSCRIBE<sup>SM</sup>**

© IGI 2020, International Gemological Institute

FD - 10 20

**www.igi.org**

Diagram illustrating the proportions of a diamond shape:

- Top-left facet: 14.5% (Medium To Slightly Thick (Faceted))
- Bottom-left facet: 43%
- Top-right facet: 14.5%
- Bottom-right facet: 14.5% (Pointed)
- Width: 59.5%
- Height: 62.1%

### ADDITIONAL GRADING INFORMATION

Polish	EXCELLENT
Symmetry	EXCELLENT
Fluorescence	NONE
Inscription(s)	LABGROWN IGI LG500145699

Comments: As Grown - No indication of post-growth treatment.  
This Laboratory Grown Diamond was created by High Pressure High Temperature (HPHT) growth process.  
Type II



# IGI

October 25, 2021	IGI Report No. LG200145699
MARQUEUSE BRILLIANT	
10.98 X 5.58 X 3.45 MM	1.19 CARAT
Carat Weight	D
Color Grade	VS 1
Clarity Grade	62.1%
Depth	58.5%
Table	Medium To Slightly Thick (Faceted)
Grain	
Griddle	
Culet	Pointed
Polish	EXCELLENT
Symmetry	EXCELLENT
Fluorescence	NONE
Inscriptions(s)	LARGEDOWN IGI LG200145699
Comments:	As Grown - No indication of post-growth treatment. This Laboratory Grown Diamond was created by high pressure high temperature (HPHT) by the CVD process. Type II

**As Grown - No indication of post-growth treatment.**  
This Laboratory Grown Diamond was created by High Pressure High Temperature (HPHT) growth process.  
**Type II**